

THIS INSTRUMENT PREPARED BY
DAVID P. LINDLEY

OF
CAULFIELD and WHEELER, INC.

SURVEYORS - ENGINEERS - PLANNERS
7900 GLADES ROAD, SUITE 100
BOCA RATON, FLORIDA 33434 - (561)392-1991
SEPTEMBER - 2013

ABBINGTON PUD

A PLANNED UNIT DEVELOPMENT
BEING A PORTION OF SECTION 2, TOWNSHIP 45 SOUTH, RANGE 42 EAST,
PALM BEACH COUNTY, FLORIDA.

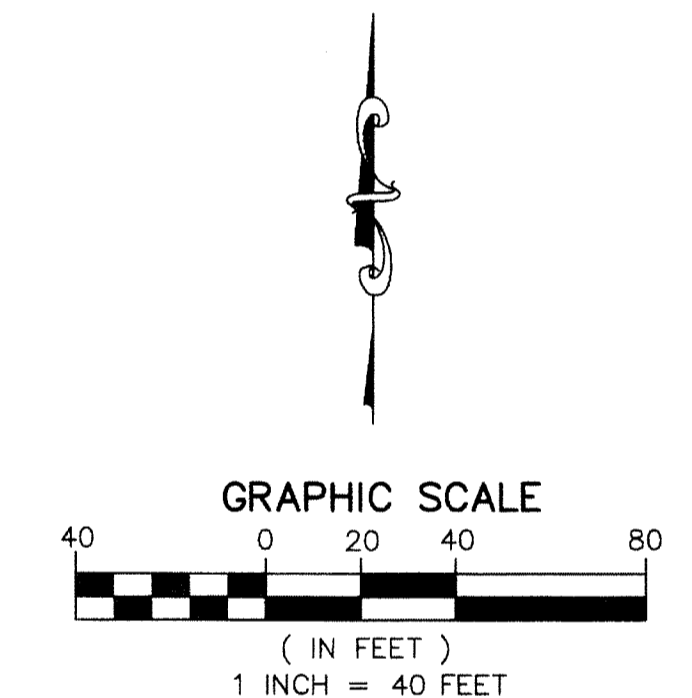
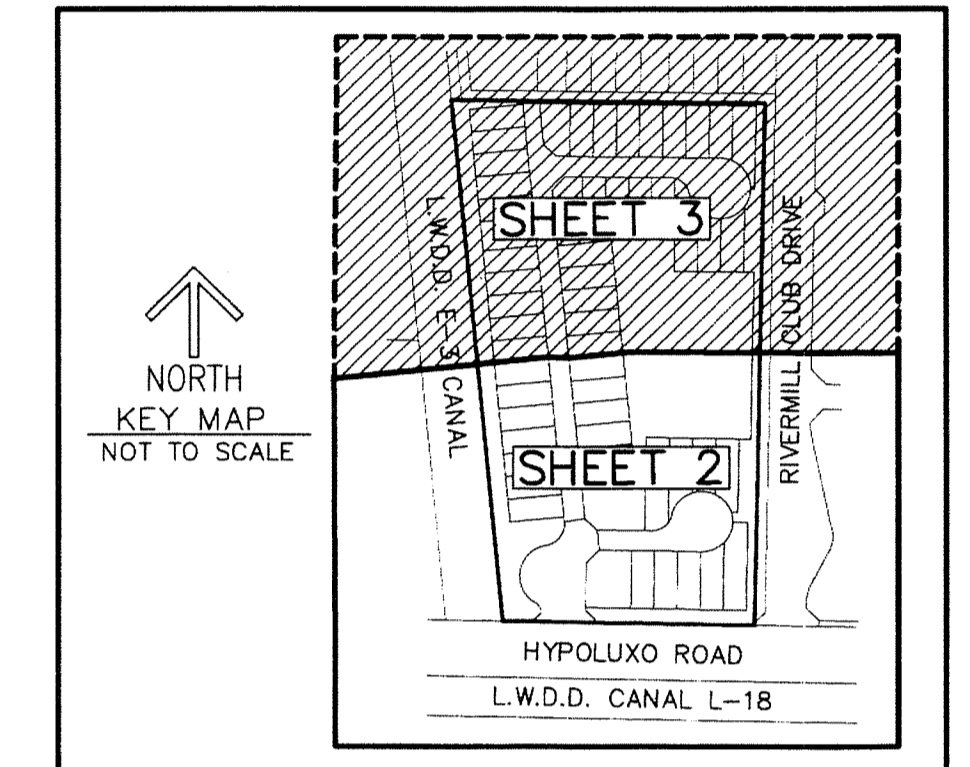
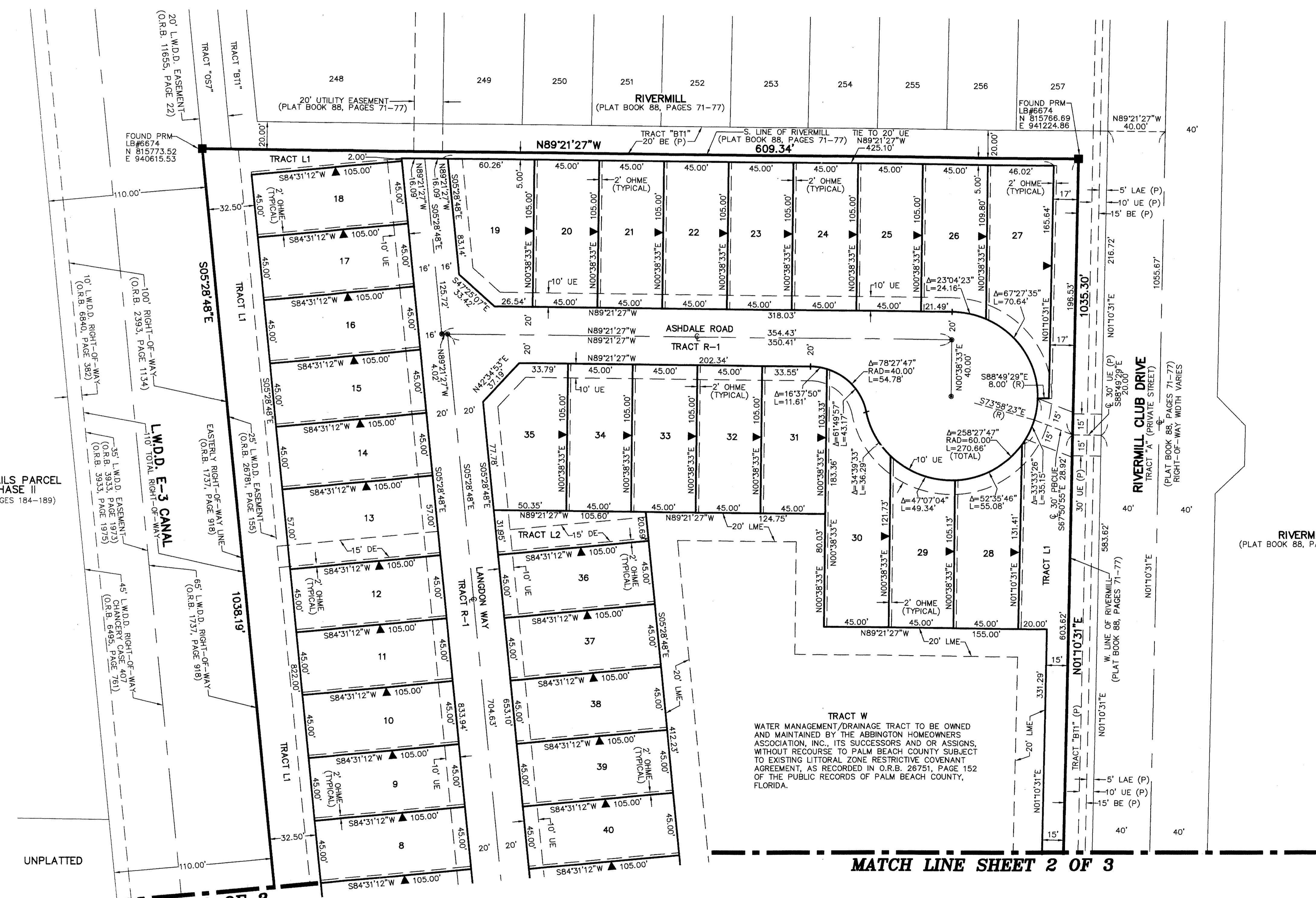
110

STATE OF FLORIDA
COUNTY OF PALM BEACH
THIS PLAT WAS FILED FOR
RECORD AT _____ M.
THIS _____ DAY OF _____
A.D. 20____ AND DULY RECORDED
IN PLAT BOOK _____ ON
PAGES _____ AND _____

SHARON R. BOCK
CLERK AND COMPTROLLER

BY: _____
DEPUTY CLERK

SHEET 3 OF 3



NOTES
COORDINATES, BEARINGS AND DISTANCES
 COORDINATES SHOWN ARE GRID
 DATUM = NAD 83 1990 ADJUSTMENT
 ZONE = FLORIDA EAST
 LINEAR UNIT = US SURVEY FEET
 COORDINATE SYSTEM 1983 STATE PLANE
 TRANSVERSE MERCATOR PROJECTION
 ALL DISTANCES ARE GROUND
 SCALE FACTOR = 1.000344
 GROUND DISTANCE X SCALE FACTOR = GRID DISTANCE
 BEARINGS AS SHOWN HEREON ARE GRID DATUM,
 NAD 83 1990 ADJUSTMENT, FLORIDA EAST ZONE.

LEGEND/ABBREVIATIONS

- ⊙ - CENTERLINE
- Δ - DELTA (CENTRAL ANGLE)
- BE - BUFFER EASEMENT
- DE - DRAINAGE EASEMENT
- E - EASTING
- L - ARC LENGTH
- LAE - LIMITED ACCESS EASEMENT
- LB - LICENSED BUSINESS
- LMAE - LAKE MAINTENANCE ACCESS EASEMENT
- LME - LAKE MAINTENANCE EASEMENT
- L.W.D.D. - LAKE WORTH DRAINAGE DISTRICT
- N - NORTHING
- OHME - OVERHANG/MAINTENANCE EASEMENT
- O.R.B. - OFFICIAL RECORD BOOK
- PCBUE - PALM BEACH COUNTY UTILITY EASEMENT
- RAD - RADIUS
- (R) - INDICATES RADIAL LINE
- UE - UTILITY EASEMENT
- ▶ - INDICATES "ZERO" SIDE OF LOT LINE
- - DENOTES PERMANENT REFERENCE MONUMENT
- 4" x 4" x 24" - CONCRETE MONUMENT
- ⊙ - DENOTES PERMANENT CONTROL POINT
- NAIL AND METAL DISK STAMPED "PCP LB3591"
- (P) - DENOTES PLAT OF RIVERMILL AS RECORDED IN PLAT BOOK 88, PAGES 71-77 OF THE PUBLIC RECORDS OF PALM BEACH COUNTY.

WINSTON TRAILS PARCEL
ELEVEN PHASE II
(PLAT BOOK 82, PAGES 184-189)

MATCH LINE SHEET 2 OF 3

MATCH LINE SHEET 2 OF 3